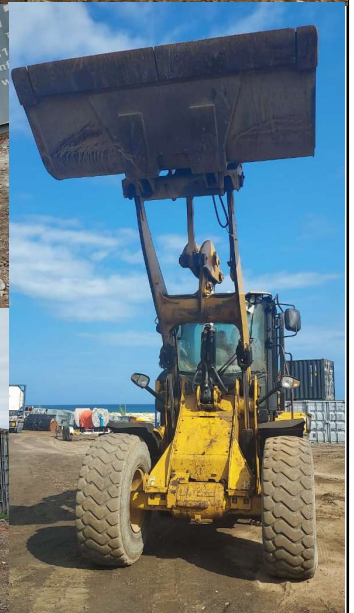


CAT 930K Wheel Loader

Yr Built: 2014 Color: Yellow
MFG: Caterpillar Mfg.

Price USD \$60,382
SLNC Item #: #9

Comments: Ascension Island – Serial # CAT0930KJRHN03178, Meter reading 9963
Sept 2022



PRODUCT SPECIFICATIONS FOR 930K



ENGINE

| | |
|---|---|
| Maximum Gross Power | 119 kW |
| Engine Model | Cat® C7.1 |
| Maximum Gross Power - 1,600 rpm - ISO 14396 (Standard Power Mode: Range 1-3*) | 113 kW |
| Maximum Net Torque - ISO 9249 (1977)/EEC 80/1269 (Performance Power Mode: Range 1-4) | 761 N·m |
| Displacement (Performance Power Mode: Speed Range 1-4) | 7.01 l |
| Maximum Gross Power - 1,800 rpm - ISO 14396 (Performance Power Mode: Range 1-4) | 119 kW |
| Maximum Gross Torque - ISO 14396 (Performance Power Mode: Range 1-4) | 787 N·m |
| Emissions | Engine meets U.S. EPA Tier 3/EU Stage IIIA/Brazil MAR-1 equivalent emission standards. |
| Maximum Net Torque - SAE J1349 (Performance Power Mode: Range 1-4) | 753 N·m |
| Note (2) | *Range 4 power is boosted to be the same as Performance Mode. |
| Displacement (Standard Power Mode: Speed Range 1-3*) | 7.01 l |
| Maximum Gross Torque - ISO 14396 (Standard Power Mode: Range 1-3*) | 787 N·m |
| Maximum Net Torque - SAE J1349 (Standard Power Mode: Range 1-3*) | 753 N·m |
| Maximum Net Torque - ISO 9249 (1977)/EEC 80/1269 (Standard Power Mode: Range 1-3*) | 761 N·m |
| Note (1) | Net power shown is the power available at the flywheel when the engine is equipped with alternator and air cleaner. |
| Net Power - 1,600 rpm - ISO 9249 (metric) (Standard Power Mode: Range 1-3*) | 151 hp |
| Maximum Gross Power - 1,600 rpm - ISO 14396 (metric) (Standard Power Mode: Range 1-3*) | 154 hp |
| Net Power - 1,800 rpm - SAE J1349 (Performance Power Mode: Range 1-4) | 116 kW |
| Maximum Gross Power - 1,800 rpm - ISO 14396 (metric) (Performance Power Mode: Range 1-4) | 162 hp |
| Net Power - 1,600 rpm - SAE J1349 | 110 kW |

(Standard Power Mode: Range 1-3*)
Net Power - 1,800 rpm - ISO 9249 (metric) 159 hp
(Performance Power Mode: Range 1-4)

BUCKETS

Bucket Capacities 2.1-5 m3 (2.7-6.5 yd3)
Bucket Capacities - General Purpose 2.1-2.7 m3 (2.7-3.5 yd3)
Bucket Capacities - Light Material 3.1-5 m3 (4.0-6.5 yd3)

WEIGHTS

Operating Weight 13130 kg
Operating Weight (1) Standard Lift - 13 130 kg (28,945 lb)
Operating Weight (2) High Lift - 13 622 kg (30,029 lb)

CAB

ROPS SAE J1040 MAY94, ISO 3471-1994
FOPS SAE J/ISO 3449 APR98, Level II, ISO 3449
1992 Level II
Note (2) A semi-cab option is available.
Note (1) Cab and Rollover Protective Structures
(ROPS) are standard.

SERVICE REFILL CAPACITIES

Cooling System 32 l
Hydraulic System - Including Tank 165 l
Fuel Tank 195 l
Transmission - Gear Box 8.5 l
Engine Crankcase 19.5 l
Axles - Rear 25 l
Axles - Front 26 l
Hydraulic Tank 90 l

TIRES

| | |
|-------------------------------------|---|
| Other Choices Vary by Region | 20.5-25 16 PR (L-3) |
| Note (2) | In certain applications, the loader's productive capabilities may exceed the tire's tonnes-km/h (ton-mph) capabilities. |
| Note (3) | Caterpillar recommends that you consult a tire supplier to evaluate all conditions before selecting a tire model. |
| Standard Size | 20.5 R25, radial (L-3) |
| Note (1) | Other tire choices are available. Contact your Cat dealer for details. |

STEERING

| | |
|---|-----------|
| Maximum Flow - Steering Pump | 130 l/min |
| Maximum Steering Torque - 0° (Straight Machine) | 50375 N·m |
| Maximum Working Pressure - Steering Pump | 24130 kPa |
| Number of Steering Wheel Turns - Full Left to Full Right or Full Right to Full Left | 3.5 turns |
| Maximum Steering Torque - 40° (Full Turn) | 37620 N·m |
| Steering Cycle Times - Full Left to Full Right - At 1,800 rpm: 90 rpm Steering Wheel Speed | 2.4 s |
| Steering Articulation Angle - Each Direction | 40° |

LOADER HYDRAULIC SYSTEM

| | |
|--|-----------|
| Hydraulic Cycle Time - Performance Mode at 1,800 rpm - Float Down, Maximum Lift to Ground Level | 2.7 s |
| Hydraulic Cycle Time - Standard Mode at 1,600 rpm - Total Cycle Time | 10.1 s |
| Maximum Working Pressure - Implement Pump | 25000 kPa |
| Hydraulic Cycle Time - Performance Mode at 1,800 rpm - Dump, at Maximum Lift Height | 1.5 s |
| Hydraulic Cycle Time - Standard Mode at 1,600 rpm - Raise, Ground Level to Maximum Lift | 5.7 s |
| Hydraulic Cycle Time - Performance Mode at 1,800 rpm - Raise, Ground Level to Maximum Lift | 5.1 s |
| Maximum Flow - Implement Pump - 4th Function Maximum Flow* | 150 l/min |

| | |
|---|--|
| Hydraulic Cycle Time - Standard Mode at 1,600 rpm - Dump, at Maximum Lift Height | 1.7 s |
| Hydraulic Cycle Time - Performance Mode at 1,800 rpm - Total Cycle Time | 9.3 s |
| Relief Pressure - Tilt Cylinder - 3rd Function Maximum Working Pressure | 25000 kPa |
| Maximum Flow - Implement Pump | 190 l/min |
| Relief Pressure - Tilt Cylinder | 28000 kPa |
| Maximum Flow - Implement Pump - 3rd Function* | 190 l/min |
| Hydraulic Cycle Time - Standard Mode at 1,600 rpm - Float Down, Maximum Lift to Ground Level | 2.7 s |
| Relief Pressure - Tilt Cylinder - 4th Function Maximum Working Pressure | 25000 kPa |
| Note | *Adjustable from 20% to 100% of maximum flow through the secondary display, when equipped. |

AXLES

| | |
|--------------|--|
| Rear | Oscillating ± 11 degrees; Open differential (standard); Limited slip differential (optional in some regions) |
| Front | Fixed; Open differential (standard); Locking differential (optional) |

TRANSMISSION

| | |
|---------------------------------------|--|
| Forward and Reverse - Range 4 | 40 km/h |
| Note | *Creeper control allows max. speed range adjustability from 1 km/h (0.6 mph) to 13 km/h (8 mph) in Range 1 through sec. display. |
| Forward and Reverse - Range 2 | 13 km/h |
| Forward and Reverse - Range 3 | 27 km/h |
| Forward and Reverse - Range 1* | 1-13 km/h (0.6-8 mph) |
| Notes | Factory default is 7 km/h (4.4 mph). |

SOUND

| | |
|-----------------|---|
| Note (3) | The declared exterior sound power level is 104 dB(A) when the value is measured according to "ISO 6395:2008." |
| Note (2) | The measurement was conducted at 70% of |

the maximum engine cooling fan speed, with the cab doors and cab windows closed.

Declared dynamic operator sound pressure level is 72 dB(A) when "ISO 6396:2008" is used to measure value for an enclosed cab.

Note (1)

930K STANDARD EQUIPMENT

POWER TRAIN

- Auto idle shut down feature
- Cat C7.1 engine
 - Power modes (Standard and Performance)
 - Power by range (High Power in Range 4)
 - Turbocharged and aftercooled
 - Filtered crankcase breather
- Coded start (requires secondary display)
- Coolant protection to -34° C (-29° F)
- Enclosed wet disc full hydraulic brakes
- Fuel priming pump, automatic
- Hydraulically driven demand cooling fan
- Hydrostatic transmission with electronic control
 - Operator modes (Default, TC, Hystat, and Ice)
 - Directional Shift Aggressiveness (fast, medium, slow)
 - Rimpull control, adjust wheel torque
 - Creeper control, adjust ground speed
- Parking brake, electric
- Single plane cooling package wide six fins per inch density
- Throttle lock and max speed limiter

HYDRAULICS

- Automatic lift and bucket kickouts, adjustable in-cab
- Bucket and fork modes, adjustable in-cab
- Cylinder damping at kickout and mechanical end stops
- Fine mode control (fast, medium, slow) in fork mode
- Hydraulic response setting (fast, medium, slow)
- Hydraulic diagnostic connectors and S·O·SSM ports

- Load sensing hydraulics and steering

ELECTRICAL

- Alternator, 115 amp, heavy duty
- 12V power supply in cab (2)
- Batteries, 1,000 CCA (2) 24V system, disconnect switch
- Back-up alarm
- Emergency shutdown switch
- Halogen work and roading lights, LED rear tail lights
- Remote jump start post
- Resettable main and critical function breakers

OPERATOR ENVIRONMENT

- 75 mm (3 in) retractable seat belt, with audible alarm and indicator
- Automatic temperature control
- External mirrors with lower parabolic
- Hydraulic control lockout
- Interior cab lighting, door and dome
- Interior rear view mirrors (2)
- Lunch box storage
- Radio ready speakers
- Seat-mounted electronic implement controls, adjustable
- Column mounted multi function control – lights, wipers, turn signal
- Tilt and telescopic steering wheel
- Tinted front glass

OTHER STANDARD EQUIPMENT

- Large-access enclosure doors with adjustable close/open force
- Parallel lift loader linkage

930K OPTIONAL EQUIPMENT

OPTIONAL EQUIPMENT

- Auto lube, integrated in secondary display
- Auxiliary flow, third and fourth function, adjustable through secondary display
- Beacon light, strobe
- Cab, deluxe
 - Camera, roof mounted, front view with separate display*
 - Rear window defroster (standard in Europe)
 - Secondary display to adjust settings (standard in Europe)
 - Sunscreen, front and rear
 - Wet arm wiper/washer, front and rear
- Camera, rear view (standard in Europe)
- Cold start package
- Corrosion protection package
- Counterweight, (heavy and logger)
- Coupler, (Fusion™ and ISO 23727)
- Debris packages (low, medium, high)
- Differential lock, front axle
- Fenders (extended cover and full coverage)
- Guarding (machine and operator)
- Linkage, high lift
- Lights, auxiliary, halogen or LED with engine compartment lights
- Lights, LED front roading
- Load check valves
- Object Detection
- Product Link™ PRO and ELITE with capabilities for software push, data logging, histogram and trend mapping
- Radio packages
- Rear wiper
- Ride Control System, adjustable through secondary display
- Seats
 - Deluxe seat – fully adjustable fabric air suspension seat with mid backrest and mechanical lumbar support

- Seats
 - Premium seat – fully adjustable leather and fabric air suspension with high backrest and air lumbar support. Seat is heated and ventilated on bottom cushion and backrest.
- Steering
 - Dual mode and secondary
- CE Certification (standard in Europe)
- NOTE: Not all features are available in all regions.
- *Forward facing camera system may be required for local EU requirements.
- Consult your local Cat dealer for additional information.