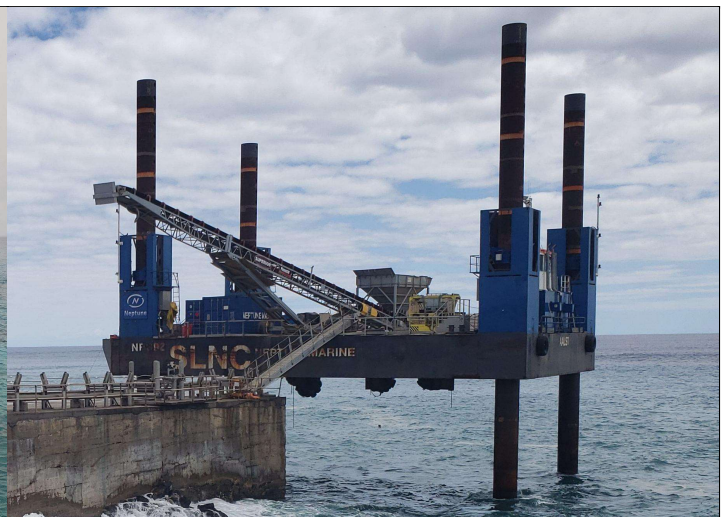
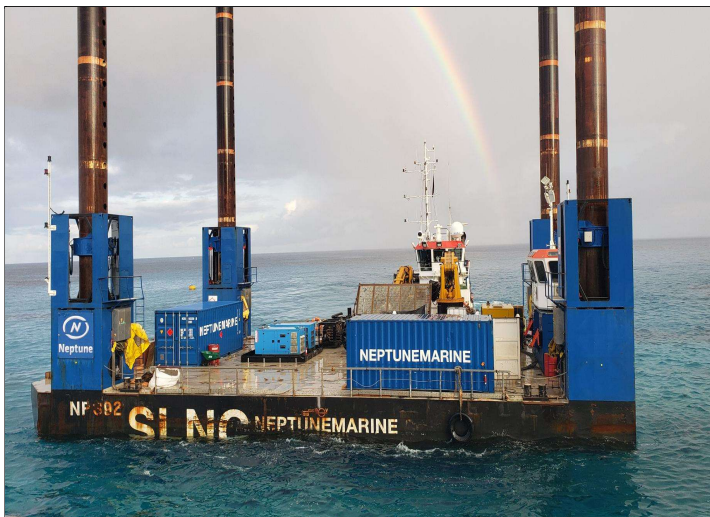


Jackup Barge NP392

Yr Built: 2014 Color: Black/Blue
MFG: Built in the Netherlands

Price USD \$2,248,200
SLNC Item #: 129

Comments: Model #: Euro-Up, 80.0' loa x 56.0' beam x 8.0' depth x 6.20' loaded draft. BVI + Hull, Mach, Offshore Self-Elev Unit, Coastal Area, Transit over 20 miles from shore w/HS<2.5m. Deck Load: 6mt/m2. FO: 264.2g. 4-point mooring system anchor(s). Genset(s): 2 - 240kVA / Perkins E7OTAGT2M. Eurojack 2417 jack-up barge. Maximum design operating depth of 82'. 4 - Spud legs (137.8' L x 3.94' diameter). Double acting jacking system (32m/hr. jacking speed). 300mt variable load. 335mt preload force per leg. Accommodations can be installed via modular units.



SLNCSurplus4Sale@schuylerline.com

All descriptions given in good faith but without guarantee. – On site inspection available upon appointment.



NP 392 | Jack-up barge

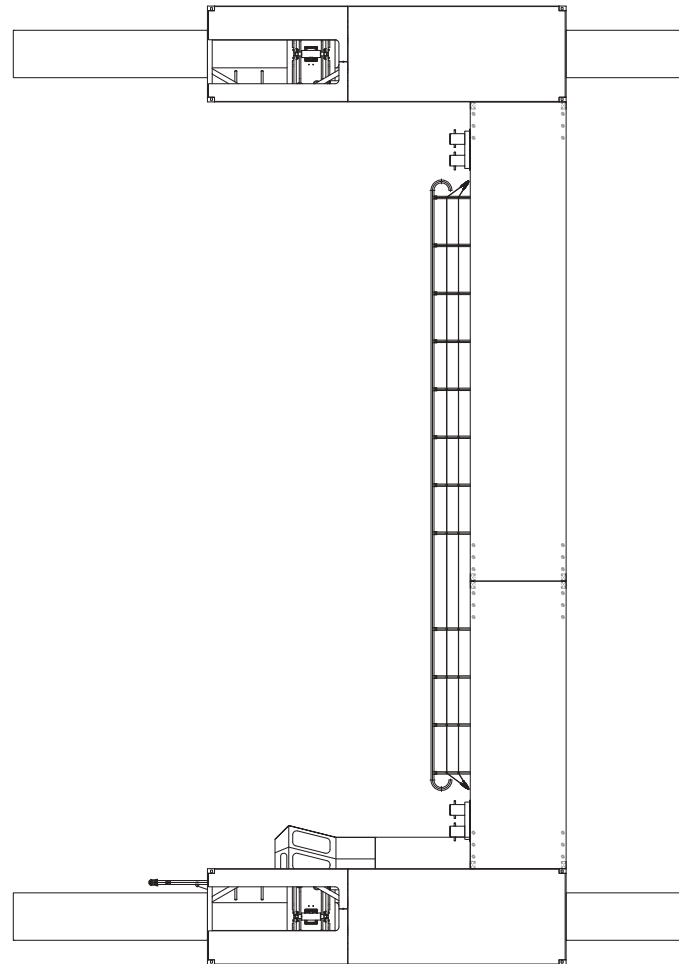
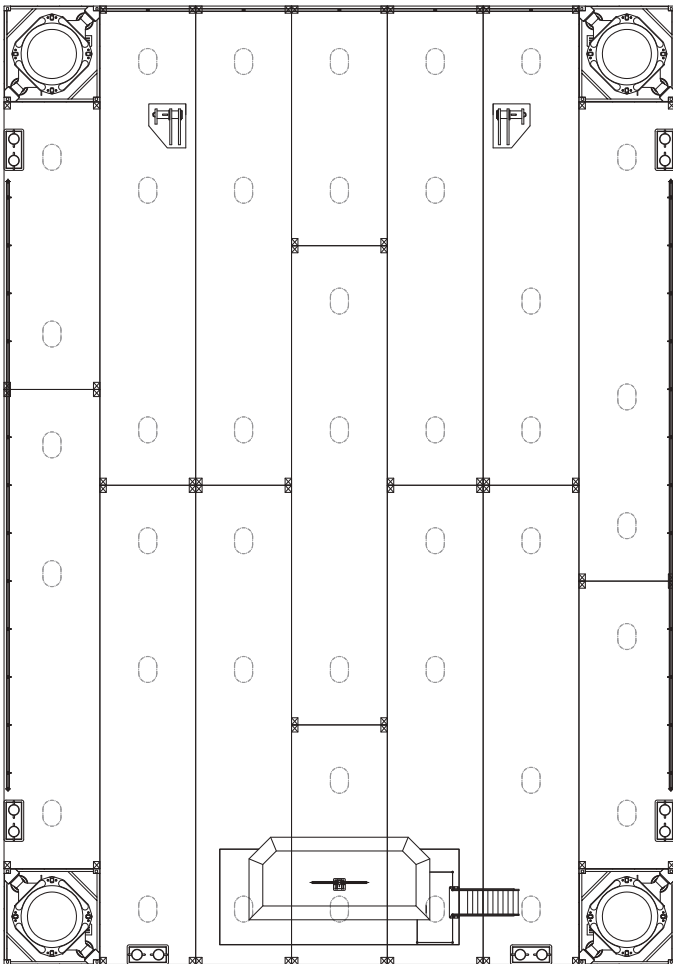
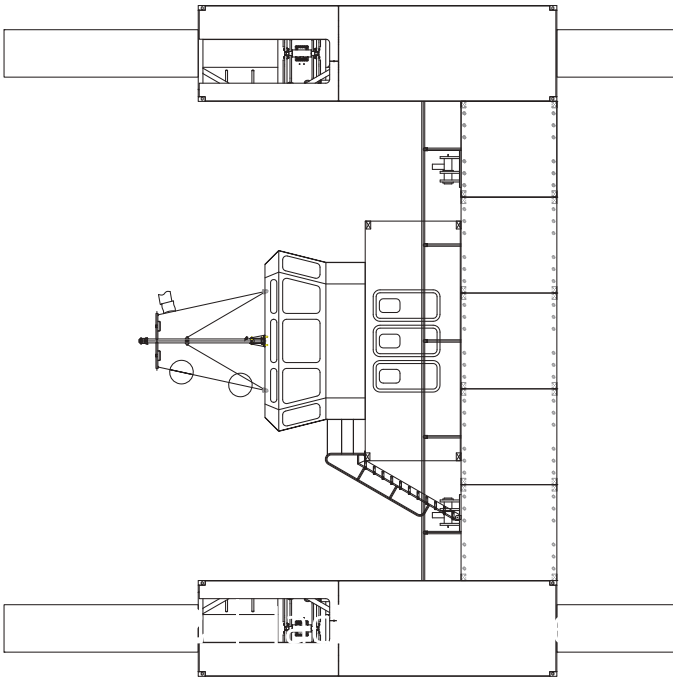


The Eurojack-Up is a multi-purpose jack-up barge design, which offers solutions to all kinds of maritime operations such as offshore construction. It can be modified to fit your demands. This could either be the installation of propulsion, or the installation of a heavy lift crane to fit your project.



CLASSIFICATION	Bureau Veritas I ✕ HULL • MACH Offshore Self Elevating Unit, Coastal Area, Transit over 20 miles from shore with HS < 2.5m
DIMENSIONS	
LENGTH O.A.	24,38 meters
BREADTH MLD.	17,08 meters
DEPTH AT SIDE	2,43 meters
DRAFT	1,89 meters
OPERATING CONDITIONS	
MAX. DESIGN WATER DEPTH	25 meters
SPUD LEGS	
LENGTH	42,0 meters
DIAMETER	1,2 meters
WEIGHT	38 tons
AUXILIARIES	
GENERATOR SETS	2x Caterpillar C4.4
TOTAL E-POWER	142,4 kW
FIFI	Certified fifi system
JACK-UP	Double acting jacking system

CAPACITY	
FUEL OIL	1000 liters
HYDRAULIC OIL	3600 liters
DECK LOAD	6 ton/m ²
JACKING PARAMETERS	
JACKING SPEED	32 m/hour
VARIABLE LOAD	300 tons
PRELOAD FORCE PER LEG	335 tons
PARAMETERS AT 16M DEPTH	
CURRENT VELOCITY	2,0 m/sec
WIND VELOCITY(SURVIVAL)	13 m/sec (30 m/sec)
SIGNIF. WAVE HEIGHT (SURVIVAL)	2,0 meters (4,0 meters)
MAX. WAVE HEIGHT (SURVIVAL)	3,72 meters (7,44 meters)
PARAMETERS AT 20M DEPTH	
CURRENT VELOCITY	2,0 m/sec
WIND VELOCITY (SURVIVAL)	13 m/sec (30 m/sec)
SIGNIF. WAVE HEIGHT (SURVIVAL)	2,0 meters (2,5 meters)
MAX. WAVE HEIGHT (SURVIVAL)	3,72 meters (4,65 meters)
OPTIONS	
MODULAR CONSTRUCTION	21 containers of 20" and 40"
POSITIONING SYSTEM	4-point mooring system
ACCOMMODATION	Modular units



EuroJack-Up 2417 | Jack-up barge

SLNCSurplus4Sale@schuylerline.com

All descriptions given in faith but without guarantee.

